

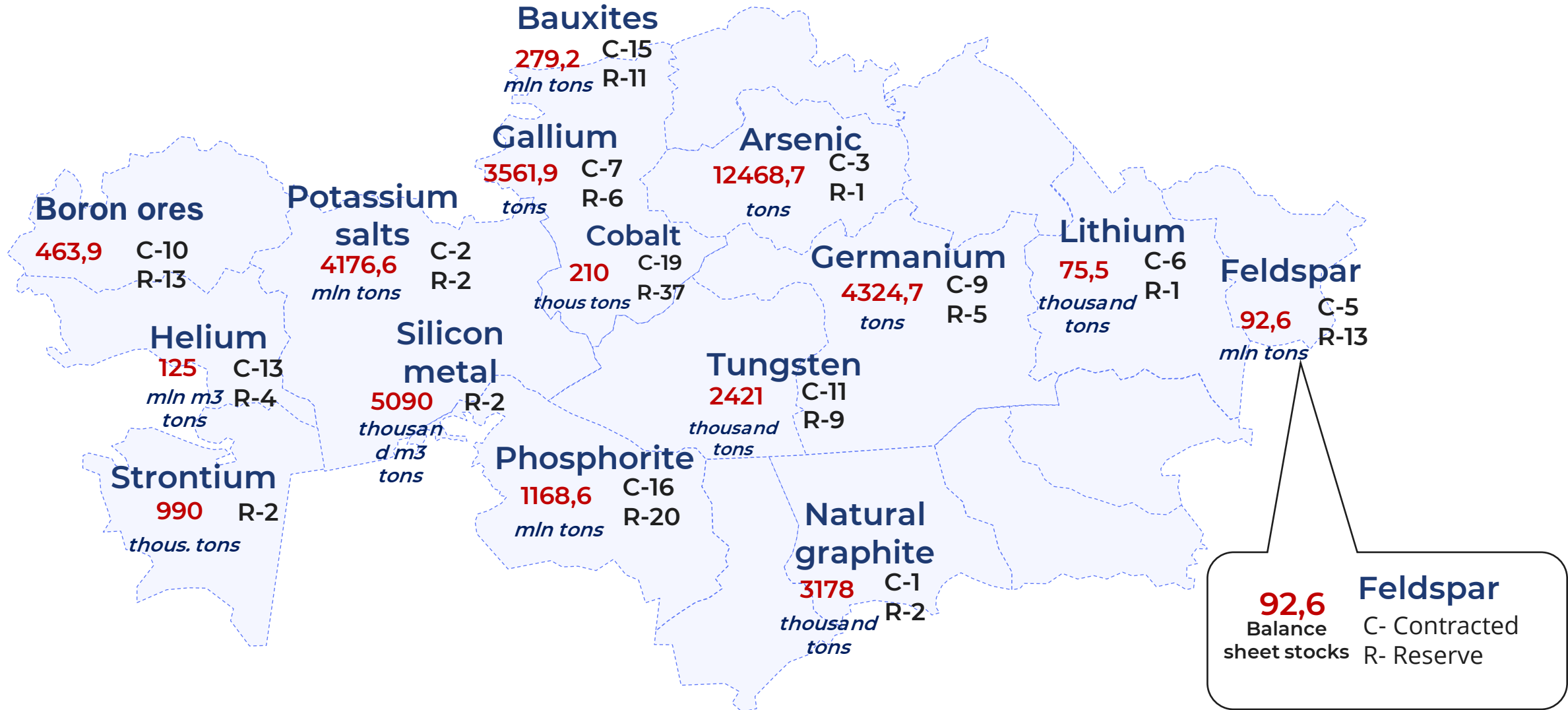


# **PROSPECTS OF CRITICAL RAW MATERIALS DEVELOPMENT IN THE REPUBLIC OF KAZAKHSTAN**

**ASTANA  
2024**

H	Number of subsoil users																7	Element symbol																He	Element name																Helium
Li Lithium	1	Be Berillium																	Mn Manganese																	2	B Boron	37	C Carbon	N	O	3	F Fluorine	Ne							
Na	Mg Magnesium																																		3	Al Aluminium	23	Si Silicon	5	P Phosphorus	S	Cl	Ar								
K	Ca	Sc Scandium	3	Ti Titanium	1	V Vanadium	Cr	7	Mn Manganese	Fe	10	Co Cobalt	3	Ni Nickel	24	Cu Copper	Zn	4	Ga Gallium	5	Ge Germanium	As	Se	Br	Kr																										
Rb	Sr Strontium	Y	Zr	3	Nb Niobium	Mo	Tc	Ru Ruthenium	Rh Rhodium	Pd Palladium	Ag	Cd	In	Sn	6	Sb Antimony	Te Magnesium	I	Xe																																
Cs	Ba	La	Hf hafnium	2	Ta Tantalium	4	W Tungsten	Re	Os Osmium	Ir iridium	Pt Platinum	Au	Hg	Tl	Pb	8	Bi Bismuth	Po	At	Rn																															
Fr	Ra	Ac	Rf	Db	Sg	Bh	Hs	Mt	Ds	Rg	Cn	Uut	Fl	Uup	Lv	Uus	Uuo																																		
La	Ce Cerium	Pr Praseodymium	Nd Neodymium	Pm	Sm Samarium	Eu	Gd Gadolinium	Tb Terbium	Dy Dysprosium	Ho	Er	Tm	Yb	Lu																																					
Ac	Th	Pa	U	Np	Pu	Am	Cm	Bk	Cf	Es	Fm	Md	No	Lr																																					

PRODUCTION IS CARRIED OUT FOR 19 TYPES OF CRITICALLY IMPORTANT RAW MATERIALS OF THE EUROPEAN UNION

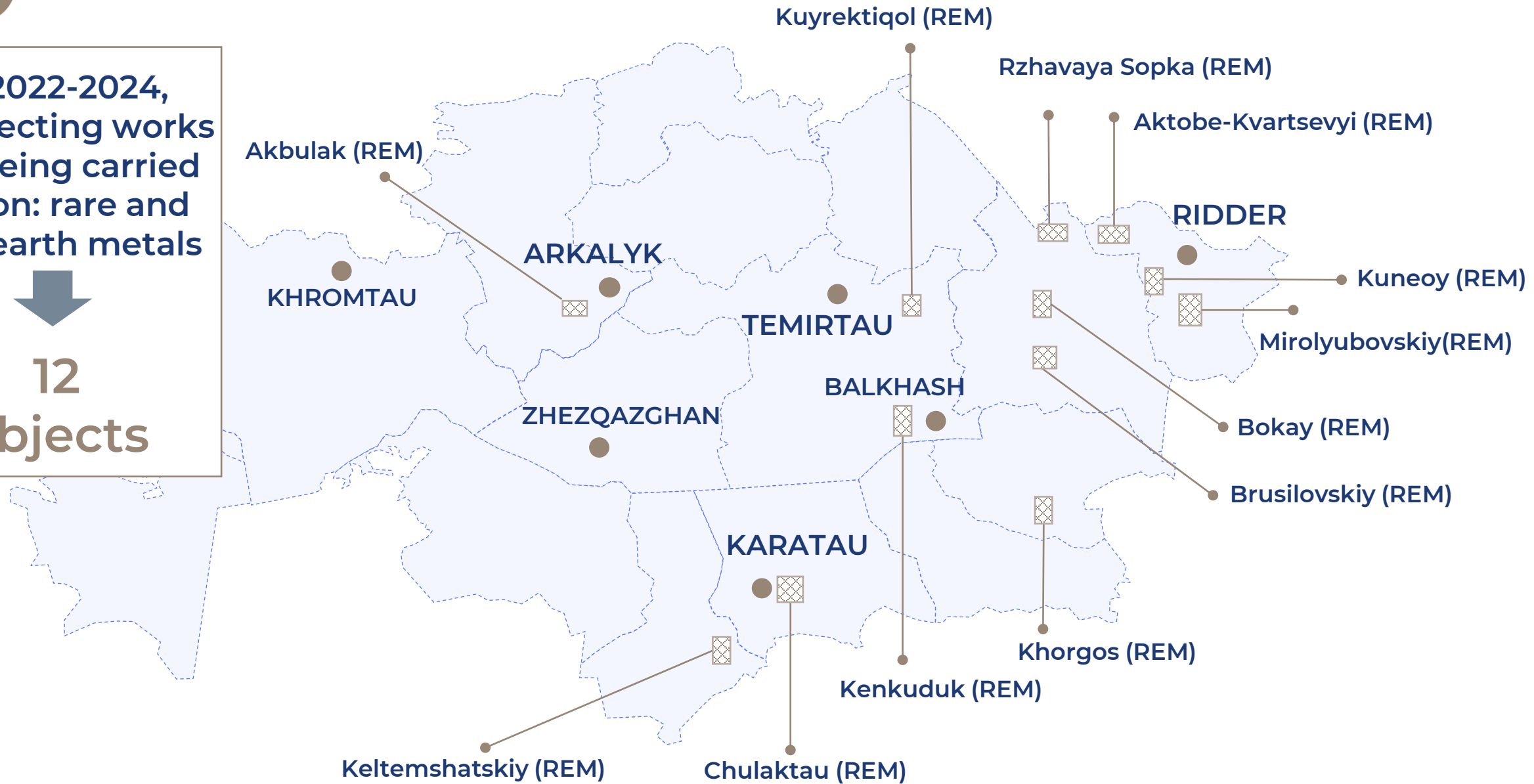


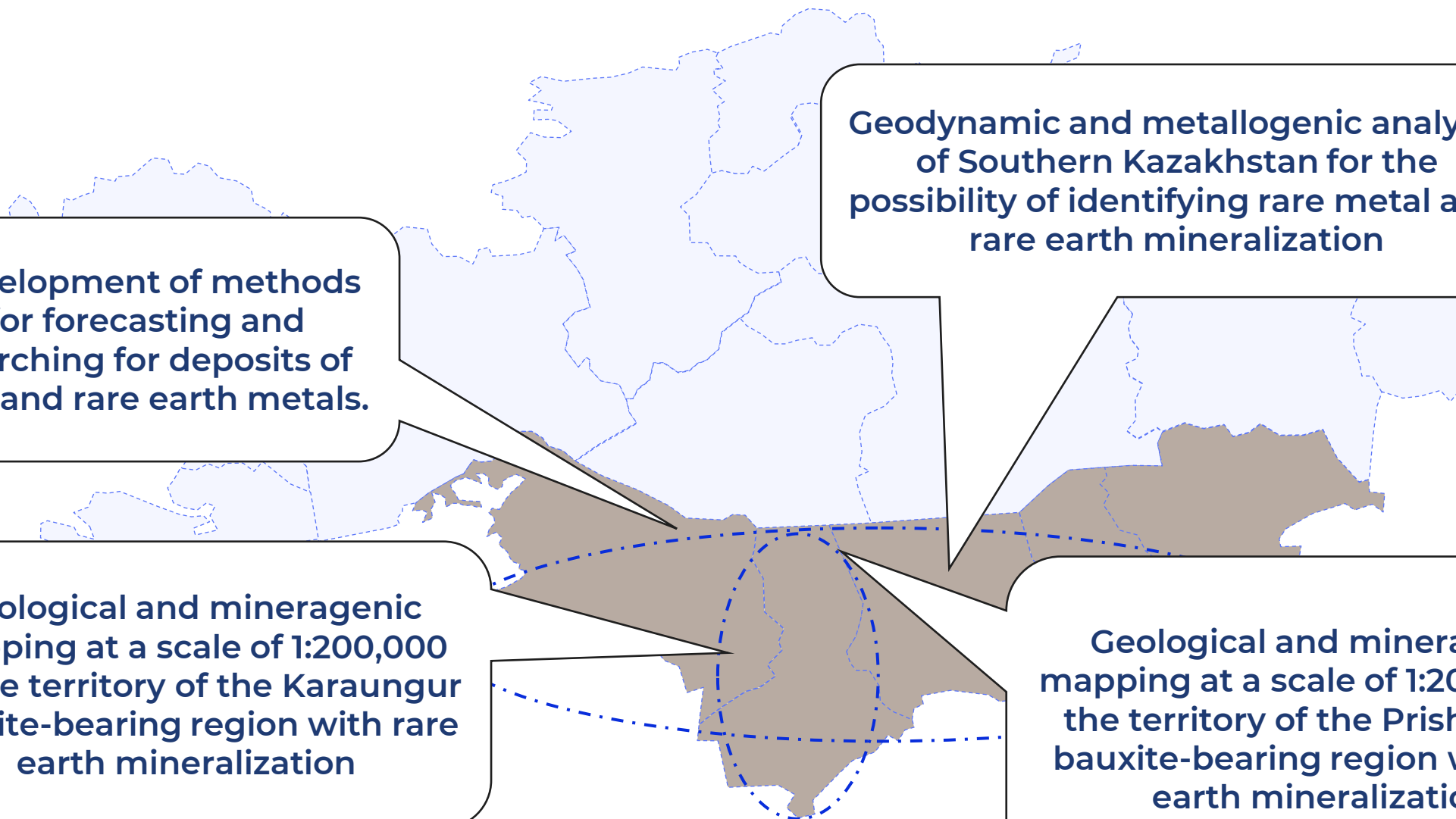


In 2022-2024,  
prospecting works  
are being carried  
out on: rare and  
rare earth metals

↓

**12**  
objects



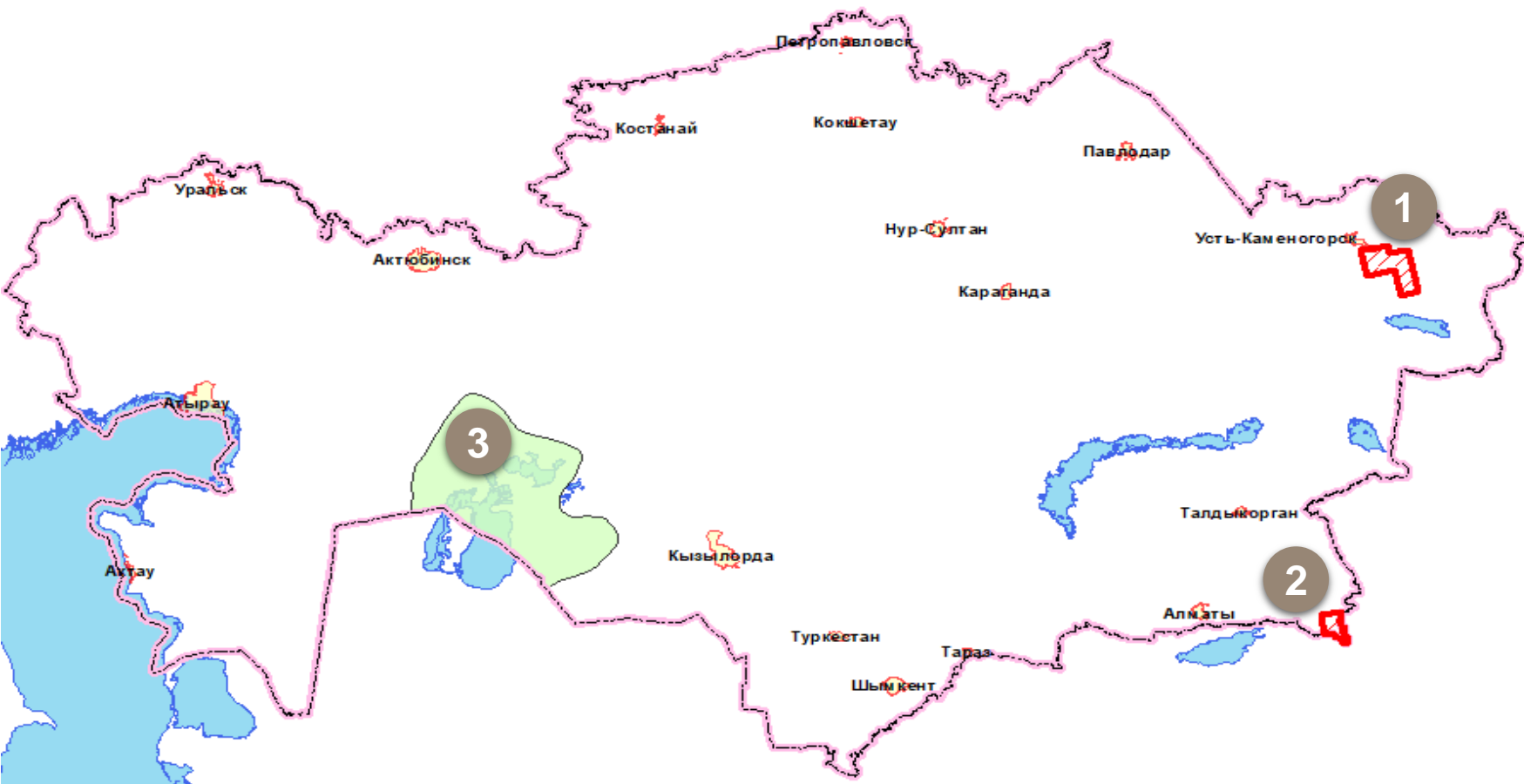


Development of methods for forecasting and searching for deposits of rare and rare earth metals.

Geodynamic and metallogenic analysis of Southern Kazakhstan for the possibility of identifying rare metal and rare earth mineralization

Geological and mineragenic mapping at a scale of 1:200,000 on the territory of the Karaungur bauxite-bearing region with rare earth mineralization

Geological and mineragenic mapping at a scale of 1:200,000 on the territory of the Prishimkent bauxite-bearing region with rare earth mineralization.



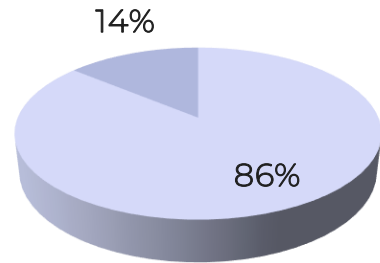
“SALAR DE ATACAMA” - salt marsh in CHILE, contains ≈30% of all world lithium reserves

- 1 **Kalba-Naryn ore zone**  
*Indigenous objects*
- 2 **Bayankolskaya square**  
*Indigenous objects*
- 3 **Aral sedimentary basin**  
*Mineralized brines, brines of lakes and salt marshes*

**RESULT**

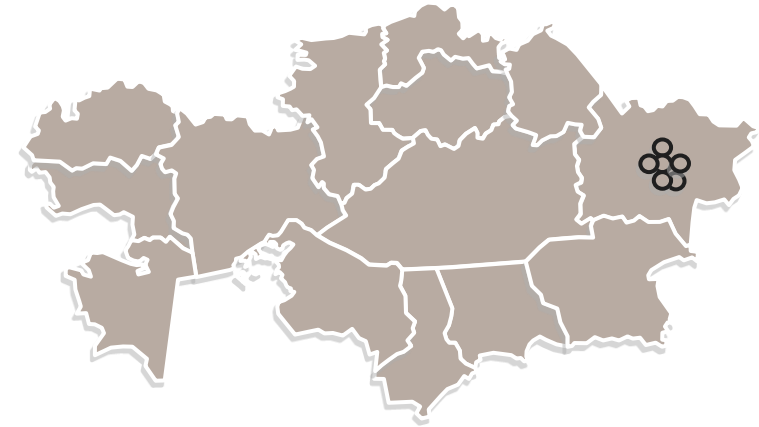
LITHIUM FACILITIES READY FOR DEVELOPMENT

7



- Balance reserves, % of reserves in the Republic of Kazakhstan
- Off-balance reserves, % of reserves in the Republic of Kazakhstan

**6** lithium deposits  
**1** tailing dump



Deposit	Average content, %	Reserves, %	Reserves Lithium oxide, tons	
			A+B+C1	C2
Akhmetkin	0,769	34,9	23285	3058
Akhmirovskoye	0,33	29,4		22217,1
Bakennoye	0,119	11,8	6182	2758
Verkhne-Baymurzinskoye	0,317	8,1	5575	583
Yubileinoye	0,306	1,7	1226	55
Medvedkovskoye	0,008	0,3		229,8
Maralushenskoye tailings dump	1,68	13,8	10399	
<b>Total for the Republic of Kazakhstan:</b>			<b>46 667</b>	<b>28 900,9</b>





TOTAL AREA OF  
REPUBLIC OF  
KAZAKHSTAN

**2 725**

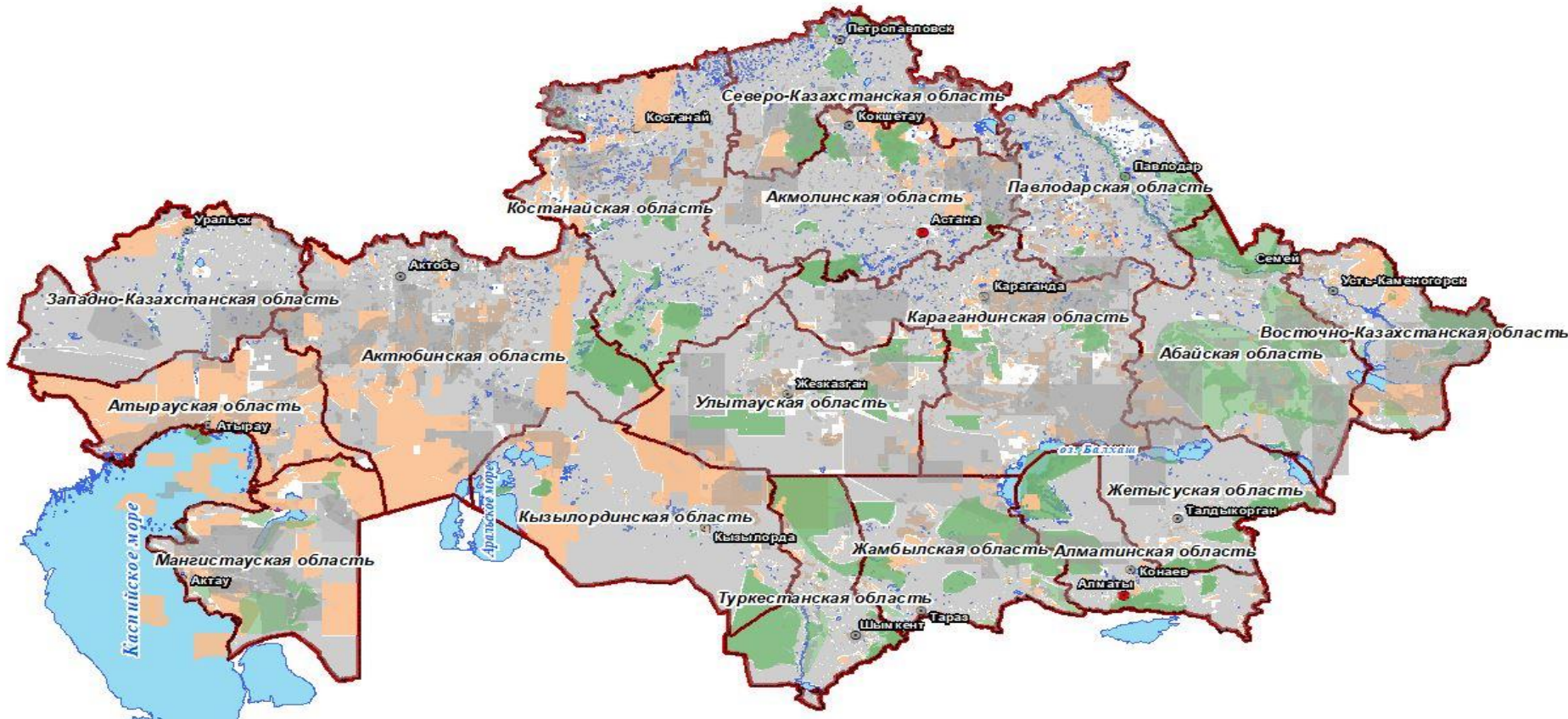
thousand km<sup>2</sup>



OPEN

**100%**

territory available for subsoil use



**SSFP**

**1983,5**  
thous. km<sup>2</sup>

**72,7%**

- solid minerals exploration
- on exploration solid minerals and common minerals
- exploration and extraction hydrocarbon
- SGSS (search and evaluation)

**368,4**  
thous. km<sup>2</sup>

**13,6%**

Operating subsoil use facilities

**295,4**  
thous. km<sup>2</sup>

**10,9%**

**SPNT**

National parks, State nature reserves, natural monuments and others.

**OTHER LANDS**

**77,7**  
thous. km<sup>2</sup>

**2,8%**

- Water Fund
- Major Cities
- Cemeteries and burial grounds
- Other



# DIGITAL PLATFORM FOR SUBSOIL USERS MINERALS.GOV.KZ

with the principle of a single window for investors in  
subsoil use

PROVIDING

1

Electronic data  
bank of geological  
information

2

Automation  
business  
processes of  
subsoil users

3

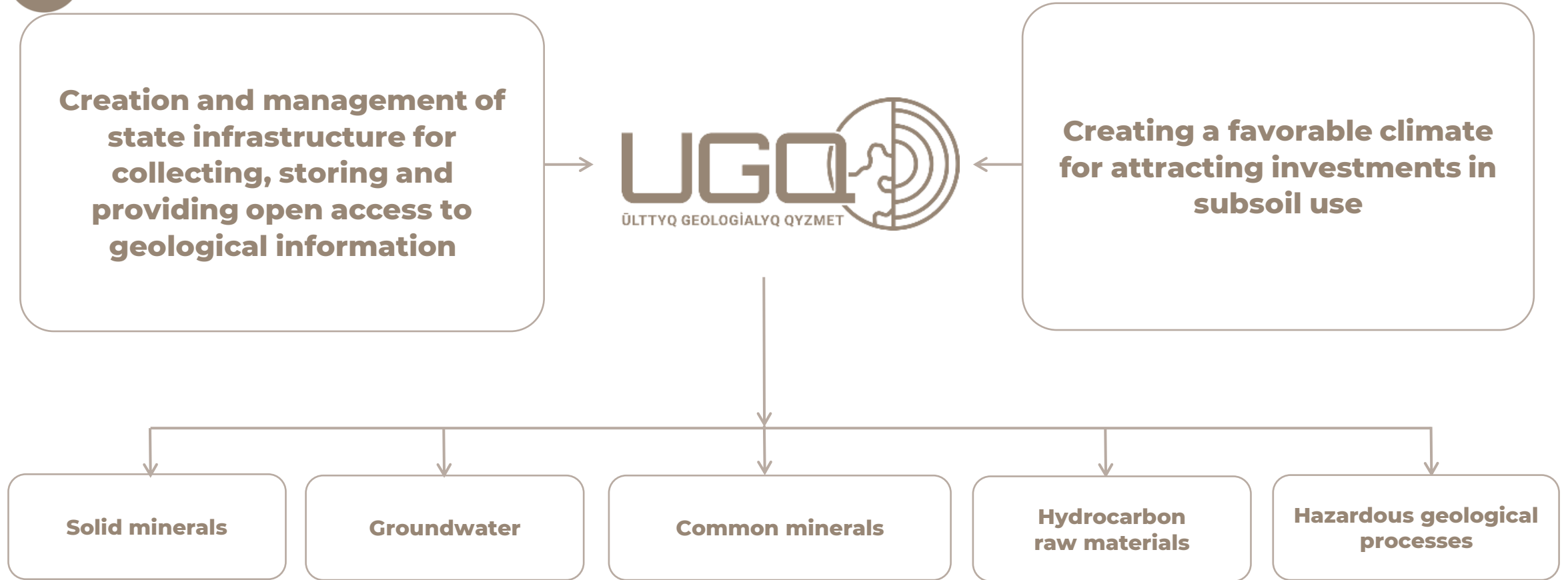
Online receiving  
of geological  
information

4

Providing reports  
through a single  
portal (personal  
account)

5

Data  
Analytics



**Providing comprehensive service support to investors through open access to geological information, operation of a data bank of mineral resources, generalization, systematization and analysis of geological information together with scientific institutions of the Republic of Kazakhstan in the field of geology**